



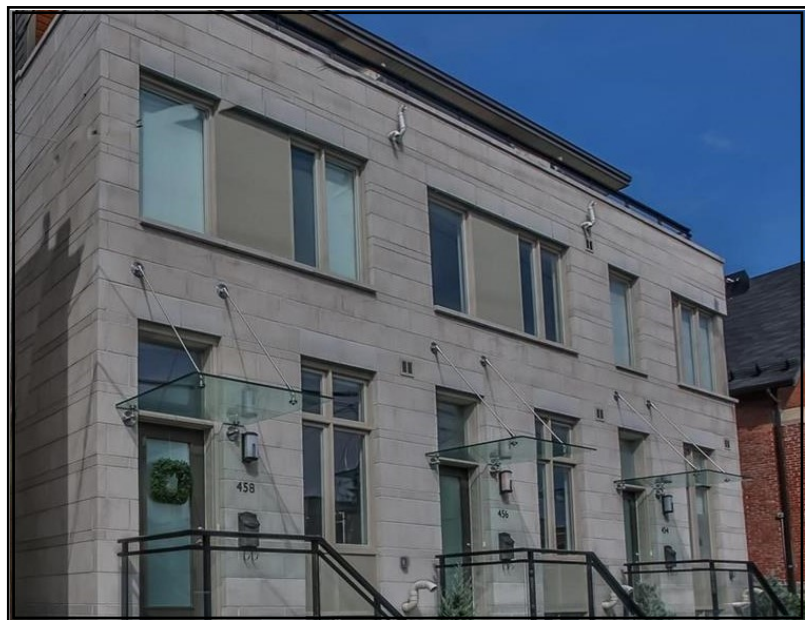
This Property is Brought to You by the REPS

The REPS are a small, hard-working real estate team based in Ottawa, Ontario. Established in 2006, we hit the ground running with our direct and honest approach to buying and selling residential and commercial properties.

We offer large scale solutions for developers, direct marketing for local listings, and everything in between. Our clients' real estate success has ensured our own continued growth and longevity in the business.



458 Churchill Avenue **\$3,250**
Ottawa, ON



Executive End Unit Townhome

Modern and spacious, Barry J Hobin designed brownstone located in the heart of Ottawa's most sought-after neighborhood of Westboro. Perfect for residential or commercial use (LC), with over 1800 square feet of bright, open-concept living spaces, including 3 bedrooms and 2.5 baths. Large master suite features ensuite, walk-in closet and spectacular balcony. Quality finishings throughout, including hardwood floors, quartz countertops, thermofoil cabinets and custom stone fireplace. Private rear patio and two heated, underground parking spots included. Welcome home!

Address	458 Churchill Avenue
List Price	\$3,250 per Month
MLS #	1106336
Neighbourhood	Westboro
Style	Row Unit/Three Storey
Year Built	2014/Approx.
Bedrooms	3
Bathrooms	3
Heating/Fuel	Forced Air, Natural Gas
Air Conditioning	Central Air Conditioning
Total Parking	2 Underground

Included: Dishwasher
Dryer
Microwave
Refrigerator
Stove
Washer

Living/Dining Rm:	13'9" x 20'
Kitchen	6'9" x 12'11"
Den	9'11" x 13'1"
Master Bed	10'3" x 13'1"
Bedroom 2	13'9" x 10'2"
Bedroom 3	13'9" x 10'

Property High- lights	Commercial (R3) Hardwood and Tile 2 Car Heated Under- ground Parking Quartz Countertops Fireplace Finished Basement Heart of Westboro 3rd Floor Balcony Hydrofoil Cabinets Stainless Steel Appliances Private Fenced Yard
----------------------------------	--

458 Churchill Avenue
Ottawa, ON

\$3,250